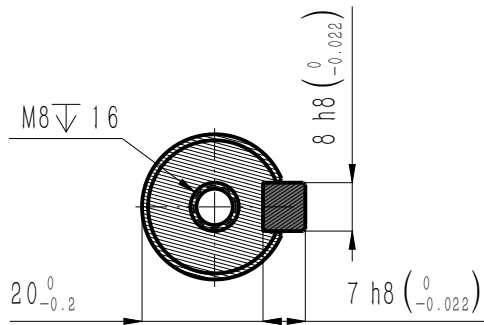


版本 Edition	变更内容 Description of the change
D	外观尺寸图模版更新



B-B

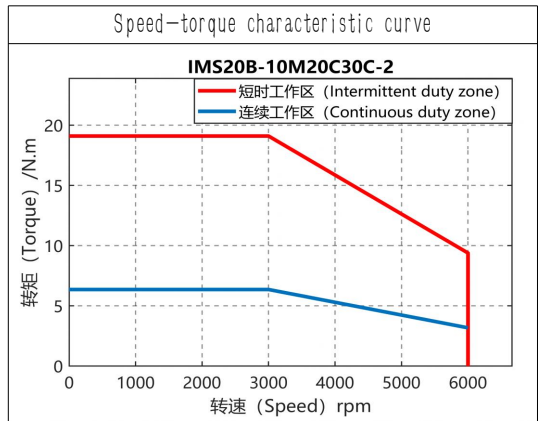
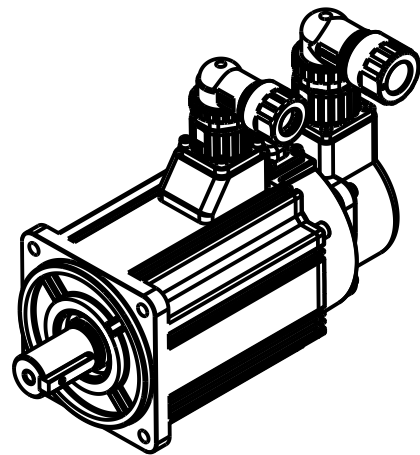
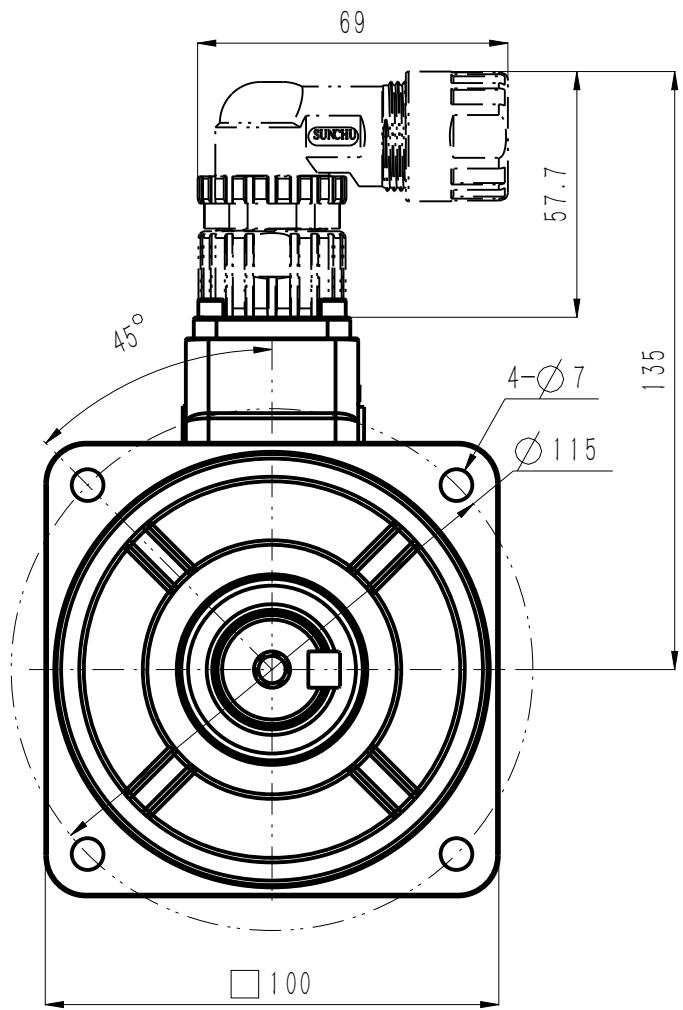
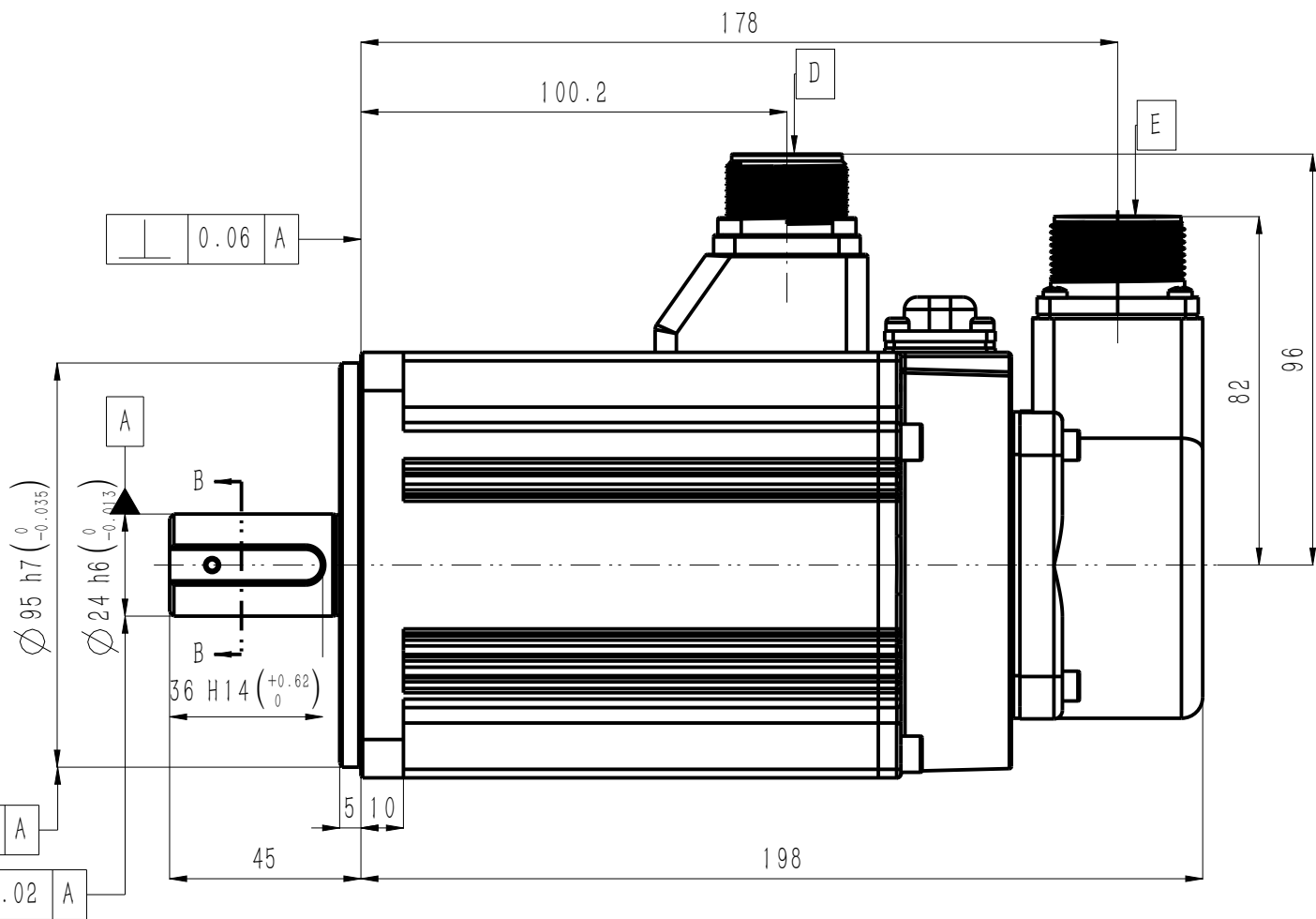
### 抱闸参数 Brake parameters

额定电压 Rated voltage	24±10%	V DC
额定功率 Rated power	17.6	W
电阻(20℃) Resistance	32.7±7%	Ω
额定扭矩 Rated torque	8	N·m
释放电压 Release voltage	>1.2	V
吸引电压 Pickup voltage	<16.8	V
吸合时间 Pickup time	<100	ms
释放时间 Release time	<40	ms
回转间隙 Rotational Clearance	<0.5° (20%额定扭矩) (20% Rated torque)	


### 电机技术参数 Motor parameters

额定电压 Rated voltage	220	V AC
额定功率 Rated power	2.0	kW
额定扭矩 Rated torque	6.4	N·m
峰值扭矩 Peak torque	19.1	N·m
额定电流 Rated current	11.1	Arms
峰值电流 Peak current	36.8	Arms
额定转速 Rated speed	3000	rpm
峰值转速 Maximum speed	6000	rpm
扭矩系数 Torque constant	0.6	N·m/Arms
反电势常数 Back EMF constant	40.5	V/krpm
线电阻 line resistance	0.32	Ω
线电感 line inductance	3.35	mH
转动惯量 Moment of inertia	3.2±10%	kg·cm <sup>2</sup>
轴向允许载荷 Axial allowable load	196	N
径向允许载荷 Radial allowable load	686	N
极对数 Number of pole pairs	5	对

IP防护等级 Ingress Protection Rating	IP67	
绝缘等级 Insulation class	F	
绝缘电阻 Insulation resistance	>100MΩ DC500V	
电机重量 Motor weight	5.8	kg
工作温度 Operating temperature	-20℃~40℃	
工作湿度 Operating humidity	20%~80% (不结露 Non-dewfall)	
推荐安装海拔 Recommend installing altitude	<1000m(1km以上降额使用) (Derate for use above 1km)	



动力航插规格 Power connector	引线定义 Wiring definition					
D	CMS05A18-A6P					
	A	B	C	D	1	2
D	2	C	A	B	1	2
D						
D	W	V	U	PE	24V DC	0V

信号航插规格 coder connector	编码器规格 Connector specifications	引线定义 Wiring definition						
MS3102A20-29P	17-bit magnetic encoder  23-bit optical encoder	A	B	E	F	G	H	J
		SD+ (蓝)	SD- (黄)	BAT+ (棕)	BAT- (白)	+5V (红)	0V (黑)	PE (绿)